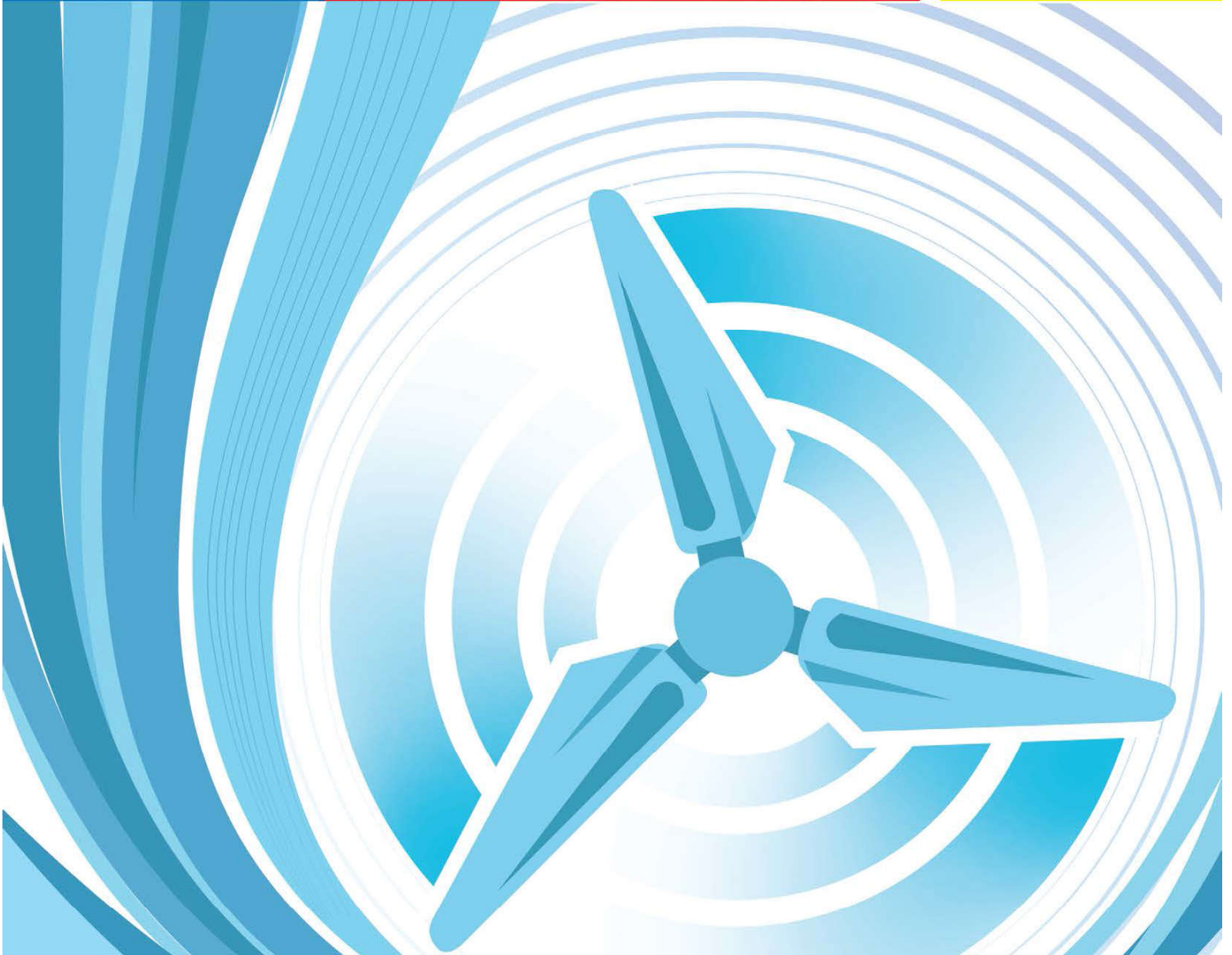




AL DEEWAN DUCT FACTORY

Manufacture for HVAC Ducting & Air Distribution Equipments




P.O.Box: 33084, Industrial Area, Street No.: 110, Doha - Qatar
Fax: +974 44808269, E-mail: aldeewanduct@gmail.com



+974 44808269



Company Profile



AL DEEWAN DUCT FACTORY, is a division of Al Deewan Enegy & Services W.L.L. that offers a comprehensive solution to Air Conditioning, Ventilation, Heating, and Refrigeration systems in any Mechanical project.

Our main focus is the manufacturing of Galvanized Iron and Pre-Insulated Ducts of various gauges and applications. Our products meet the international requirements of many recognized standards, including; ASHRAE, SMACNA and DW.

We have a dedicated 1200m² factory facility equipped with state of the art automated machineries, CNC Plasma Cutting and Auto Duct Former Coil line CNC System. As well as all the necessary forming machines.

Over the years, we have successfully supplied ducts to many of Qatar's major projects, including; Ministry of Interior Headquarters, Sinyar Tower, Labour City, Mshereib Downtown Doha Phase-2, Al-Jazeera Administration building, Katara Children's Mall & Stone Cladding, Premier Inn Hotel, Rajagiri Public School, and multiple other projects.

Our well oriented workforce includes multiple specialized teams of highly experienced Mechanical Engineers, Draughtsmen, CNC Programmers, Supervisors, Duct Fabricators, Welders, and Duct Installation teams. All our employees have a solid experienced background, and understanding of HVAC Engineering, and can accommodate you to your specific requirements and standards.

At Al Deewan Duct Factory, we take pride in our outstanding Installation teams for the Galvanized Iron & Pre-Insulated Ducts, who over the years have managed to successfully completed many projects all across Qatar, including; Procurement Directorate Building & Head Quarters Building in QAF Camp@ Sailiyah, Steel Fabrication Shop@ UmmSaid, B+G+3 Apartment Building@ Al-Wakara, Global Antiques and Arts@ Pearl Qatar, Galaxy Sports Pop Corn Girl@ Ezdan mall, Galaxy Sports@ Pearl Qatar, Warehouse@ Industrial Area and lot of other Villas around Doha.

Here at Al Deewan Duct Factory, we value and encourage good and trustworthy business ethics and indorse long term and sustainable relationships with partnering businesses, through the basis of respect, trust and mutual benefit.



RANGE OF PRODUCTS

- Rectangular Galvanized Steel, Black steel (HR & CR) Ducting.
- Plenum Boxes with Spigot
- Flat hemmed & Standing "S" Cleat, "C" Cleat
- Flanges & Corners of various sizes
- Double & Single Skin Turning Vanes
- Aluminium Cladding for Exposed Duct & Chilled Water Pipe
- Circular & Rectangular Volume Dampers
- Insulated Double skinned Access Door
- Pre-insulated Duct with complete accessories
- Galvanized Steel & Aluminium Plain Circular Duct



AL DEEWAN
DUCT FACTORY



AL DEEWAN DUCT FACTORY

Rectangular Ducting :

Fabrication of rectangular metal ducting such as Straight Duct, Reducers, Offsets, Elbow, Bends of different type of longitudinal and Transverse Joint as per the standards. Ducts are manufactured with state of Art facilities fully computerized machineries such as Auto Duct Former, Plasma Cutting machine and latest forming technologies.

G.I Duct Construction:- G.I Rectangular ducts made out from Hot Dipped Galvanized sheets standard according to ASTM A 653, LFQ(Lock Forming Quality) with G90/ Z-275 zinc coating

Black Steel/ MS Ducting:- Black Steel ducts are made out from HR & CR black sheet with liquid tight continuous external weld. MS angle welded continuously on edges for Transverse Joints.



Stainless Steel Ducting:- SS ducts fabricated from SS sheets of 316/304 with Pittsburgh Longitudinal seams and 25/30 mm self flange for transverse joint.

Aluminium Ducting:- Aluminium ducts as per SMACNA, ASHRAE, DW-144 & 142 made out from AA 1100/ equal grade of sheets with Pittsburgh longitudinal seams and S & C drive slip in transverse joints

Aluminium Cladding:- Aluminium cladding work as per SMACNA, DW 144 & 142 standards made out from AA 1100 / equal grade Aluminium sheets



AL DEEWAN DUCT FACTORY

Circular Volume Control damper

The Round Volume Control Damper suitable for high /medium / low pressure rectangular or circular ducting. The casing and blades are made out from 20/22 g G.I Sheets and designed to operate one control point manually by quadrant set.



Rectangular Volume Control dampers

Rectangular VCD is made of multi opposed or parallel blades. Outer frame made of flange type or slip drive type for easy installation at site. Blades are G.I Single skin interlocking and mounted on nylon bushings operated by external linkage. Hand locking quadrant provided suitable for motorized or manual. To prevent leakage, blade edges are fitted with foam gasket

Access Doors

Access door made of 22 g galvanized steel flange frame and double skinned 24 g galvanized door panel with Cam lock and foam gasket around. Bottom edge will be notched knock for easy to fixing in duct. The access doors are available with or without hinges

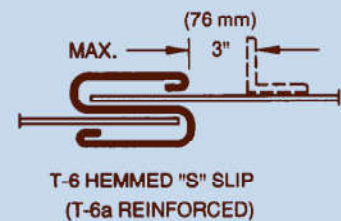
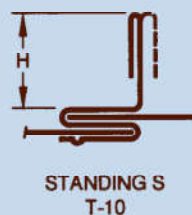
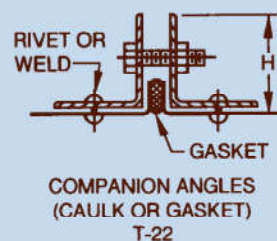
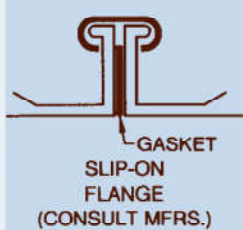




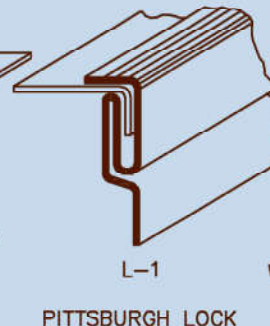
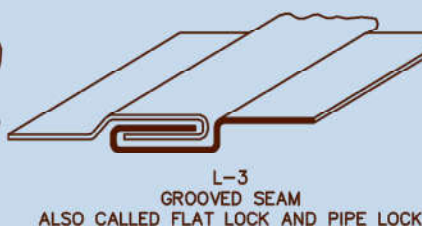
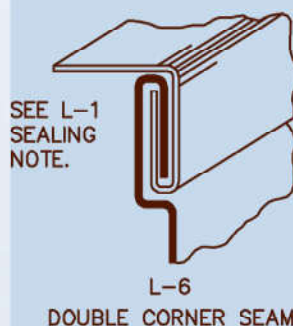
AL DEEWAN DUCT FACTORY

Salient Features:

- ▶ G.I Duct Shall be stiffened by beading at 300 mm distance to reducing vibration and drumming noise of duct .
- ▶ Best quality ducts made out from various brands of G.I Sheets
- ▶ Duct construction as per SMACNA, ASHRAE, DW142&144 and also custom fabricate rectangular ducting according to consultant specifications
- ▶ A reduced amount of leakage with excellent quality slide-on flange transverse joints with integral sealant
- ▶ Accuracy in dimensions with fully computerized machineries
- ▶ Ready to Install and easy for handling at site
- ▶ All ducts having a label with identification of the drawing/Floor/Unit/area details for an easy installation at site



TRANSVERSE (GIRTH) JOINTS



LONGITUDINAL SEAMS — RECT. DUCT

HVAC Duct Construction Standards Metal and Flexible • Second Edition





AL DEEWAN DUCT FACTORY WLL

LIST OF MACHINERY

<u>Sl.No</u>	<u>Machinery</u>	<u>Brand & Origin</u>	<u>Qty</u>
01	Automatic Notching Duct Forming Machine	Firmac, U.K	2
02	CNC Plasma Cutting Machine	CMS 3 Plasma Wasp, Germany	2
03	CNC Plasma Cutting Machine	SWIFT-CUT, U K	1
04	Nuloc Auto Duct Seaming Machine	Firmac, U.K	2
05	Power Guillotine Shearing Machine	Firmac, U.K	1
06	Pedestal Power Swaging Machine	Firmac, U.K	1
07	Auto Guide Power Flanging Machine	Firmac, U.K	2
08	"S" & "C" Cleat Machine	Firmac, U.K	2
09	Power Bending Rolls	Firmac, U.K	2
10	Hydraulic Box & Pan Folding Machine	Firmac, U.K	1
11	Pittsburgh Roll former with Double Seam Roll	Firmac, U.K	2
12	Manual Swaging Machine	Tennsmith, U.S.A	1
13	Spot Welding Machine	NDI 18, Syria	1
14	Clinching Machine for Flange Fixing	Trumpf, Switzerland	3
15	Manual Pan & Box Folding Machine	URO, Italy	1
16	Manual Cleat Bending Machine	Tennsmith, U.S.A	1
17	Cut-Off Machine	Fujita, Japan	3
18	Elbow Gorelocker Machine	Sayes, China	1
19	Hydraulic Fork Lift - 5 Ton Capacity	HELI - China	1
20	3 Ton Truck for duct delivery (3 Nos)	Mitsubishi, Japan	3

P.O Box: 33084, Industrial Area, Street No: 49, Gate No: 110, Doha- Qatar

Tel/Fax: +9744 44808269, E-mail: ductfactory@aldeewanqatar.com



AL DEEWAN DUCT FACTORY WLL



Automatic Notching Duct Forming Machine, "Firmac - U.K"



P.O Box: 33084, Industrial Area, Street No: 49, Gate No: 110, Doha- Qatar

Tel/Fax: +9744 44808269, E-mail: ductfactory@aldeewanqatar.com



AL DEEWAN DUCT FACTORY WLL



CNC Plasma Cutting Machine, CMS 3 Plasma Wasp, Germany



CNC Plasma Cutting Machine, "SWIFT-CUT, U.K"

P.O Box: 33084, Industrial Area, Street No: 49, Gate No: 110, Doha- Qatar

Tel/Fax: +9744 44808269, E-mail: ductfactory@aldeewanqatar.com



AL DEEWAN DUCT FACTORY WLL



Nuloc Duct Seem Closing Machine, "Firmac - U.K"

P.O Box: 33084, Industrial Area, Street No: 49, Gate No: 110, Doha- Qatar

Tel/Fax: +9744 44808269, E-mail: ductfactory@aldeewanqatar.com



AL DEEWAN DUCT FACTORY WLL



Hydraulic Box & Pan Folding Machine, "Firmac - U.K"



P.O Box: 33084, Industrial Area, Street No: 49, Gate No: 110, Doha- Qatar

Tel/Fax: +9744 44808269, E-mail: ductfactory@aldeewanqatar.com



AL DEEWAN DUCT FACTORY WLL



Power Guillotine Shearing Machine, "Firmac - U.K"



G.I Coils Stock

P.O Box: 33084, Industrial Area, Street No: 49, Gate No: 110, Doha- Qatar

Tel/Fax: +9744 44808269, E-mail: ductfactory@aldeewanqatar.com



AL DEEWAN DUCT FACTORY WLL



Power Bending Rollers, "Firmac - U.K"



P.O Box: 33084, Industrial Area, Street No: 49, Gate No: 110, Doha- Qatar

Tel/Fax: +9744 44808269, E-mail: ductfactory@aldeewanqatar.com



AL DEEWAN DUCT FACTORY WLL



Pittsburgh Roll former with Double Seam Roll, "Firmac - U.K"



Slide-on Flange Stock

P.O Box: 33084, Industrial Area, Street No: 49, Gate No: 110, Doha- Qatar

Tel/Fax: +9744 44808269, E-mail: ductfactory@aldeewanqatar.com



AL DEEWAN DUCT FACTORY WLL



"S" & "C" Cleat Machine, "Firmac - U.K"



P.O Box: 33084, Industrial Area, Street No: 49, Gate No: 110, Doha- Qatar

Tel/Fax: +9744 44808269, E-mail: ductfactory@aldeewanqatar.com



AL DEEWAN DUCT FACTORY WLL



Auto Guide Power Flanging Machine, "Firmac - U.K"



Manual Cleat Bending Machine, "Tennsmith-U.S.A"

P.O Box: 33084, Industrial Area, Street No: 49, Gate No: 110, Doha- Qatar

Tel/Fax: +9744 44808269, E-mail: ductfactory@aldeewanqatar.com



AL DEEWAN DUCT FACTORY WLL



Pittsburgh Pneumatic Hammer



Spot Welding Machine

P.O Box: 33084, Industrial Area, Street No: 49, Gate No: 110, Doha- Qatar

Tel/Fax: +9744 44808269, E-mail: ductfactory@aldeewanqatar.com



AL DEEWAN DUCT FACTORY WLL



Pedestal Power Swaging Machine, "Firmac - U.K"



P.O Box: 33084, Industrial Area, Street No: 49, Gate No: 110, Doha- Qatar

Tel/Fax: +9744 44808269, E-mail: ductfactory@aldeewanqatar.com



AL DEEWAN DUCT FACTORY WLL



Hydraulic Fork lift (Heli - 5 Ton Capacity)



P.O Box: 33084, Industrial Area, Street No: 49, Gate No: 110, Doha- Qatar

Tel/Fax: +9744 44808269, E-mail: ductfactory@aldeewanqatar.com



AL DEEWAN DUCT FACTORY WLL

Projects

Few of our Clients/projects, list as follows:

<i>Project</i>	<i>MEP/Main Contractor</i>	<i>Consultant</i>
<i>Al Jazeera Administration Building</i>	<i>Space Maker</i>	<i>Qatar Design Consortium</i>
<i>School # 9 at Qatar Foundation</i>	<i>Marine Air Conditioning & Refrigeration Co.</i>	<i>Sketch Engineering & Consultants</i>
<i>G + M Office & Workshop at Ras Laffan</i>	<i>Sine Wave Electromechanical Services W.L.L</i>	<i>QDC & White Young Qatar</i>
<i>Al Jazeera Studio 7</i>	<i>Space Maker</i>	<i>Qatar Design Consortium</i>
<i>Workshop G + 1 & Offices</i>	<i>Art line Contracting Co.</i>	<i>Al Aqsa Engineering Consultancy</i>
<i>Al Kass / Al Dawri Sports Channel</i>	<i>Space Maker</i>	<i>Qatar Design Consortium</i>
<i>2Schools (6 & 7) at Al Kissa</i>	<i>Marine Air Conditioning & Refrigeration Co.</i>	<i>Sketch Engineering & Consultants</i>
<i>Katara Children's Mall & Stone Cladding</i>	<i>Marine Air Conditioning & Refrigeration Co.</i>	<i>Projacs International (Project Management Team)</i>
<i>Business Square Marina (B+G+20)</i>	<i>Draieh Contracting</i>	<i>Universal Design Centre</i>
<i>Barzan Offshore Project @ Ras laffan</i>	<i>Al Ajaj Limited Company</i>	<i>Ras Gas</i>
<i>Sinyar Tower (2B+G+52 Floors)</i>	<i>Trans Gulf International</i>	<i>Diwan Al Emara</i>

P.O Box: 33084, Industrial Area, Street No: 49, Gate No: 110, Doha- Qatar

Tel/Fax: +9744 44808269, E-mail: ductfactory@aldeewanqatar.com



AL DEEWAN DUCT FACTORY WLL

<i>Project</i>	<i>MEP/Main Contractor</i>	<i>Consultant</i>
<i>Labour City</i>	<i>Al Ali Engineering Client P.E.O</i>	<i>MZ & Partners</i>
<i>Msherieb Down Town Phase -2</i>	<i>Trans Gulf International</i>	<i>Gensler/Buro Happold</i>
<i>First Grade Sports Club Phase -2</i>	<i>Al Balagh Trading Contracting Company</i>	<i>K E O</i>
<i>Qatar Gas Waste water Treatment</i>	<i>Qatar Engineering Construction Co. W.L.L</i>	<i>Qatar Gas</i>
<i>Rajagiri Public School</i>	<i>Marine Air Conditioning & Refrigeration Co.</i>	<i>Sketch Engineering & Consultants</i>
<i>Procurement Directorate Building at Saliya Camp (F-308-01)</i>	<i>Bianco Trading & Contracting</i>	<i>Qatar Emiri Corps of Engineers</i>
<i>H.Q Building for Transport Unit at Saliya Camp (F-309-01)</i>	<i>Bianco Trading & Contracting</i>	<i>Qatar Emiri Corps of Engineers</i>
<i>Lexus Show Rooms & Offices (4B +G+ 2)</i>	<i>Shannon Engineering Company</i>	<i>Arab Engineering Bureau</i>
<i>Vehicle Stores for Intelligence Services</i>	<i>Gulf Turrets W.L.L.</i>	<i>Qatrai Emiri Corps of Engineers</i>
<i>Construction of HQ Building for Emiri Border Guard</i>	<i>Gulf Turrets W.L.L.</i>	<i>Qatari Emiri Corps of Engineers</i>
<i>Ministry of Interior Headquarters</i>	<i>Trans Gulf International</i>	<i>C.E.G</i>
<i>Proposed G+B+3 Apartment Building@ Al Wakra</i>	<i>Hadico</i>	<i>Hadico</i>

P.O Box: 33084, Industrial Area, Street No: 49, Gate No: 110, Doha- Qatar

Tel/Fax: +9744 44808269, E-mail: ductfactory@aldeewanqatar.com



AL DEEWAN DUCT FACTORY WLL

<i>Project</i>	<i>MEP/Main Contractor</i>	<i>Consultant</i>
<i>Proposed office building (B+G+M+2)</i>	<i>Sinewave Electromechanical Services W.L.L</i>	<i>Sketch Engineering Consultant</i>
<i>Premier Inn Hotel@ Education City</i>	<i>PIH</i>	<i>DEWAN/QDC</i>
<i>Barracks at Abu Samara Camp</i>	<i>Gulf Turrets W.L.L</i>	<i>Qatari Emiri Corps of Engineers</i>
<i>Construction of New Warehouse@ Al Jazeera</i>	<i>Gulf Panel Contracting Company</i>	<i>APG</i>
<i>Proposed Swimming pool for GHQ Administration department at Sailiyah</i>	<i>Sinewave Electromechanical Services W.L.L</i>	<i>Qatari Emiri Corps of Engineers</i>
<i>Fahd Residential Building (2B+G+10)</i>	<i>FBA Engineering & Contracting</i>	<i>Arab Consulting Engineers(ACE)</i>
<i>Proposed Residential Building at Fareej Bin Mehmoud (B+G+7)</i>	<i>Shannon Engineering Company</i>	<i>Dara Engineering Consultants</i>
<i>Al Bidda Tower- Ground Floor Reception Lobby</i>	<i>Nysa Trading & Contracting Co. W.L.L</i>	<i>Architecture & Planning Group</i>
<i>Msherieb Down Town Phase -1 B</i>	<i>Carillion, Qatar Building Company JV</i>	<i>Gensler/Buro Happold</i>
<i>Lusail City Development CMRL BLVD with Road D3, Underground Car Parking</i>	<i>Lightning Electro Mechanical W.L.L</i>	<i>Dorsch Qatar</i>
<i>American Academy School</i>	<i>Nysa Trading & Contracting Co. W.L.L</i>	<i>Sketch Engineering</i>
<i>Energy City Qatar</i>	<i>Zublin International Qatar</i>	<i>ABS International Architects</i>

P.O Box: 33084, Industrial Area, Street No: 49, Gate No: 110, Doha- Qatar

Tel/Fax: +9744 44808269, E-mail: ductfactory@aldeewanqatar.com



AL DEEWAN DUCT FACTORY WLL

<i>Project</i>	<i>MEP/Main Contractor</i>	<i>Consultant</i>
<i>Al Mannai Villa B+G+1+PH</i>	<i>Singapore Eng. & Contr. Co. WLL</i>	<i>HTCO</i>
<i>Viva Bahriya Towers 12&13(Package-1)</i>	<i>Voltas Limited</i>	<i>Shaker Consultancy Group</i>
<i>Construction of Chemical Factory</i>	<i>Al Safwa Trading & Contracting</i>	<i>AL - SADD Consulting Engineering</i>
<i>Fox Hills North "J" DARA A</i>	<i>Marine Air Conditioning & Refrigeration Co.</i>	<i>Arab Engineering Bureau</i>
<i>QP Fire Station No. 6 at Ras Laffan</i>	<i>Marine Air Conditioning & Refrigeration Co.</i>	<i>ERGA QATAR</i>
<i>AL Fazaa Head Quarters</i>	<i>Bukshisha Building Construction Co.W.L.L</i>	<i>Gulf Engineering & Industrial Consultancy</i>
<i>Msheireb Downtown Doha - Phase 4</i>	<i>TCC/CCC - JV</i>	<i>C.E.G</i>
<i>Proposed QAF ES 'Hail Communication Network Building</i>	<i>Marine Air Conditioning & Refrigeration Co.</i>	<i>Rassem Engineering Consultancy</i>
<i>Residential Building (2B+G+4) Fox Hills C14 @ Lusail</i>	<i>Marine Air Conditioning & Refrigeration Co.</i>	<i>Arabian Engineers Consultant</i>

P.O Box: 33084, Industrial Area, Street No: 49, Gate No: 110, Doha- Qatar

Tel/Fax: +9744 44808269, E-mail: ductfactory@aldeewanqatar.com

Projects

Few of our Clients/projects, list as follows:



**AL DEEWAN
DUCT FACTORY**

Project	MEP/Main Contractor	Consultant
Al Jazeera Administration Building	Space Maker	Qatar Design Consortium
New School at Qatar Foundation	Marine Air Conditioning & Refrigeration Co.	Sketch Engineering & consultants
G + M Office & Workshop at Ras Laffan	Sine Wave Electromechanical Services W.L.L	QDC & White Young Qatar
Al Jazeera Studio 7	Space Maker	Qatar Design Consortium
Workshop G + 1 & Offices	Art line Contracting Co.	Al Aqsa Engineering Consultancy
Al Kass / Al Dawri Sports Channel	Space Maker	Qatar Design Consortium
2 New Schools at Al Kissa	Marine Air Conditioning & Refrigeration Co.	Sketch Engineering & Consultants
Katara Children's Mall & Stone Cladding	Marine Air Conditioning & Refrigeration Co.	Projacs International (Project Management Team)
Barzan Offshore Project @ Ras laffan	Al Ajaj Limited Company	Ras Gas
Sinyar Tower (2B+G+52 Floors)	Trans Gulf International	Diwan Al Emara
Labour City@ Industrial Area	Al Ali Engineering	MZ & Partners
Msherieb Down Town Phase -2	Trans Gulf International	Gensler/Buro Happold
First Grade Sports Club Phase -2	Al Balagh Trading Contracting Company	K E O
Rajagiri Public School	Marine Air Conditioning & Refrigeration Co.	Sketch Engineering & Consultants
Procurement Directorate Building at Sailyah Camp (F-308-01) Bianco	Bianco Trading & Contracting	Qatar Emiri Corps of Engineers
H.Q Building for Transport Unit at Sailyah Camp (F-309-01)	Bianco Trading & Contracting	Qatar Emiri Corps of Engineers
Lexus Show Rooms & Offices (4B +G+ 2)	Shannon Engineering Company	Arab Engineering Bureau
Vehicle Stores for Intelligence Services	Gulf Turrets W.L.L.	Qatari Emiri Corps of Engineers
Construction of HQ Building for Emiri Border Guard	Gulf Turrets W.L.L.	Qatari Emiri Corps of Engineers
Ministry of Interior Headquarters	Trans Gulf International	C.E.G
Proposed G+B+3 Apartment Building @ Al Wakra	Hadico	Hadico
Proposed office building (B+G+M+2)	Sinewave Electromechanical Services W.L.L	Sketch Engineering Consultant
Premier Inn Hotel@ Education City	Al- Ali Engineering Company	DEWAN/QDC
Barracks at Abu Samara Camp	Gulf Turrets W.L.L.	Qatari Emiri Corps of Engineers
Construction of New Warehouse @ Al Jazeera	Gulf Panel Contracting Company	APG
Proposed Swimming pool for GHQ Administration department at Sailyah	Sinewave Electromechanical Services W.L.L	Qatari Emiri Corps of Engineers
Fahd Residential Building (2B+G+10)	FBA Engineering & Contracting	Arab Consulting Engineers(ACE)
Proposed Residential Building at Fareej Bin Mehmoud (B+G+7)(Noura Park)	Shannon Engineering Company	Dara Engineering Consultants

